

West Town

543 NOBLE ST, CHICAGO, ILLINOIS

METRO
COMMERCIAL REAL ESTATE

CORNER OPPORTUNITY NESTLED IN WEST TOWN // 1,761 SF WITH 600 SF BASEMENT



PLEASE NOTE: THE PHOTOS SHOWN ARE RENDERINGS FOR REFERENCE ONLY

PROPERTY HIGHLIGHTS

- Corner opportunity nestled in West Town
- Café/Bakery Ready 2nd Generation Space
- Two (2) areas plumbed for restaurant/bakery/cafe use
- Large Basement Space Available for Storage with Bathroom
- Modified Gross Lease Available

DEMOGRAPHICS

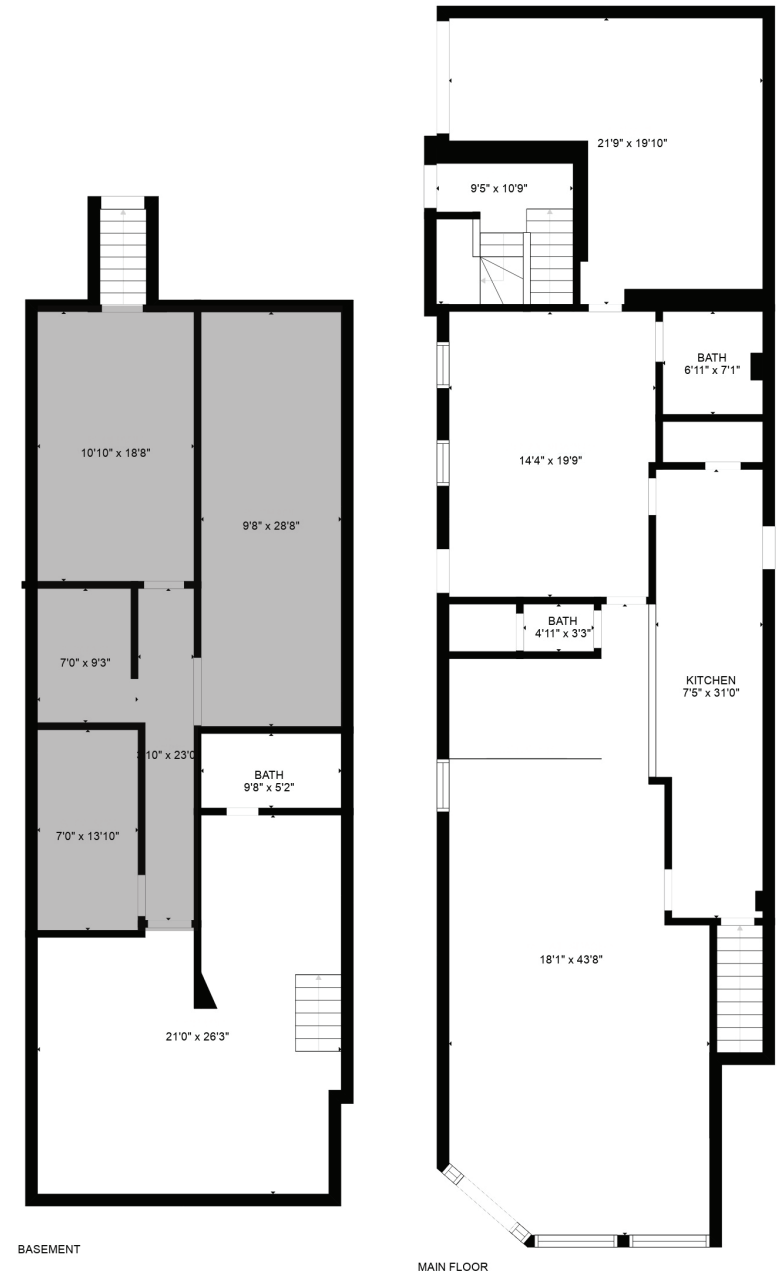
	½ MILE	1 MILE	2 MILES
TOTAL POPULATION	14,524	60,731	273,197
DAYTIME POPULATION	12,982	65,642	577,099
HOUSEHOLDS	7,519	32,644	149,672
AVG HH INCOME	\$194,272	\$215,024	\$204,724

TRAFFIC COUNTS

	COUNT
NOBLE ST	3,053 VPD
ASHLAND AVE	22,281 VPD
OGDEN AVE	21,954 VPD

WALK SCORE®

WALK SCORE	89	very walkable > most errands can be accomplished on foot
TRANSIT SCORE	78	excellent transit > transit is convenient for most trips
BIKE SCORE	98	biker's paradise > daily errands can be accomplished on a bike



Aerial





Leasing Contacts

HANNAH PERL

HPERL@METROCRE.COM

847.849.1026

JONATHAN HYMAN

JHYMAN@METROCRE.COM

224.365.8144



WWW.METROCRE.COM