



AVAILABLE
ANIMAL HOSPITAL

1,728 SF 2ND GEN MEDICAL SPACE WITH PARKING

MEDICAL SPACE AVAILABLE

516 DEMPSTER ST, EVANSTON, IL

FOR LEASE







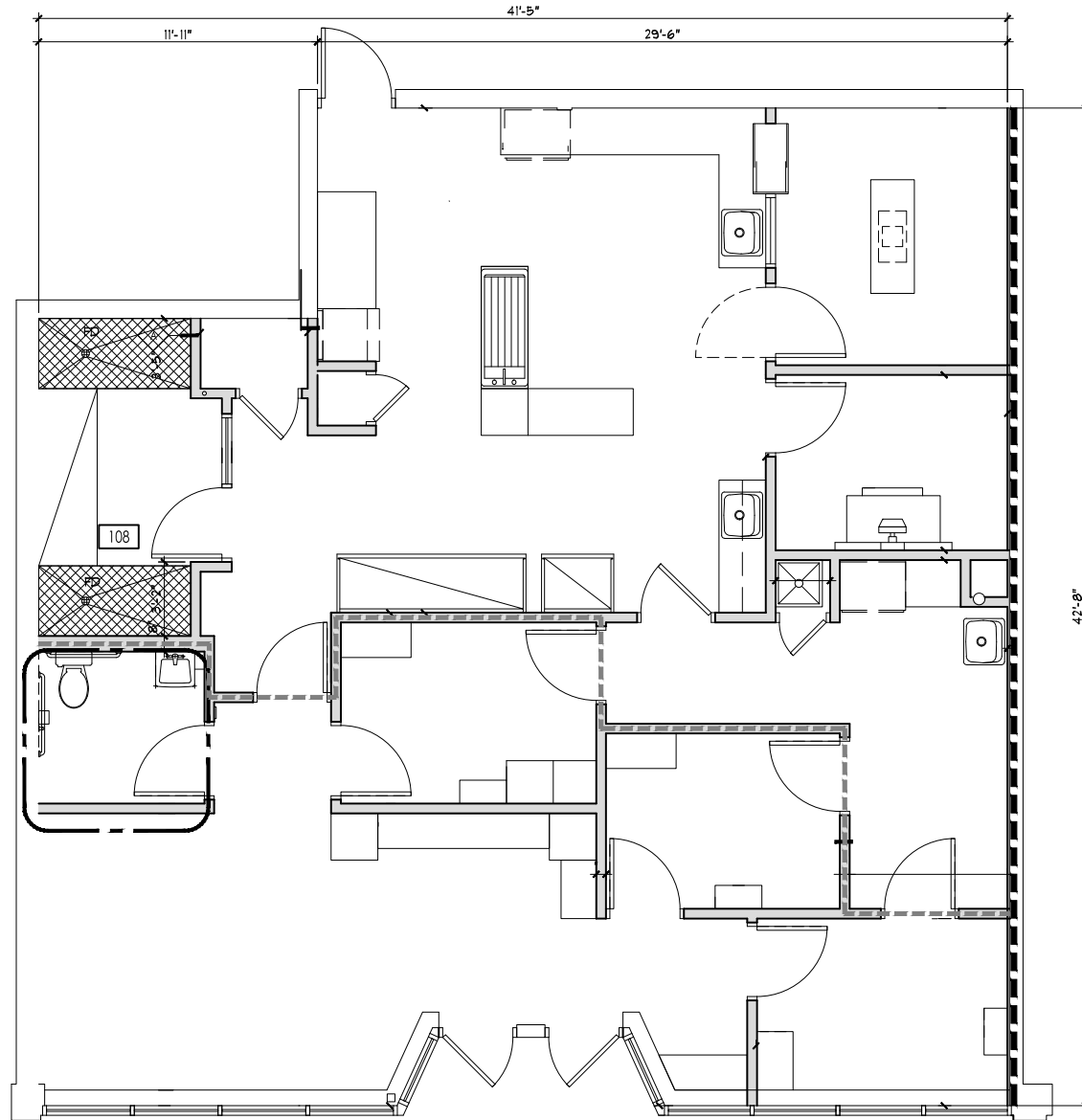
CONTACT: HANNAH PERL hperl@metrocre.com 847.849.1026 // JONATHAN HYMAN jhyman@metrocre.com 224.365.8144

MEDICAL SPACE AVAILABLE

516 DEMPSTER ST, EVANSTON, IL

FOR LEASE

	EXISTING WALLS TO REMAIN
	NEW WALLS TO BE CONSTRUCTED
	SOUND AND ODOR WALL TO DECK DRYWALL BOTH SIDES. REFER TO PARTITION TYPES 'B' AND 'D'
	PERFECT TURF (INDOOR BATHROOM FLOOR MATERIAL IN DOG RUNS)



2ND GENERATION MEDICAL SPACE

GLA = 1,728 SF

CONTACT
INFORMATION:

HANNAH PERL
hperl@metrocre.com
847.849.1026

JONATHAN HYMAN
jhyman@metrocre.com
224.365.8144

1142 West Madison St., Suite 405,
Chicago, IL 60607

www.MetroCRE.com

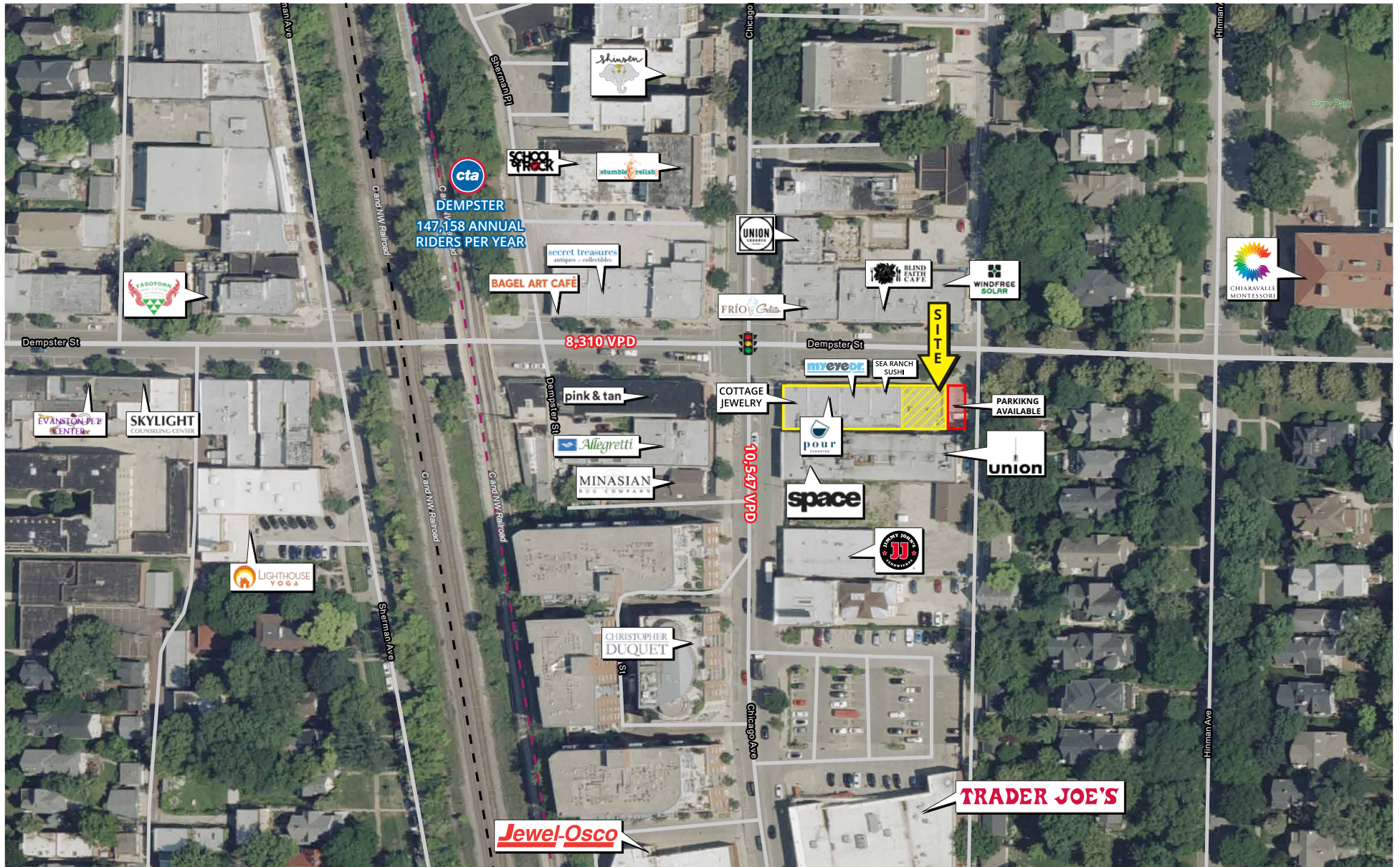


METRO
COMMERCIAL REAL ESTATE

MEDICAL SPACE AVAILABLE

516 DEMPSTER ST, EVANSTON, IL

FOR LEASE



CONTACT
INFORMATION:

HANNAH PERL
hperl@metrocre.com
847.849.1026

JONATHAN HYMAN
jhyman@metrocre.com
224.365.8144

1142 West Madison St., Suite 405,
Chicago, IL 60607
www.MetroCRE.com

