

# DOWNTOWN HINSDALE

## BUILDING FOR SALE

11-21 E First St. Hinsdale, IL 60521



CONTACT  
INFORMATION:

PETER BALYEAT  
peterb@kormanleder.com  
773.307.5540

STEVE BAER  
sbaer@metrocre.com  
847.412.9898



# GET TO KNOW THE AREA



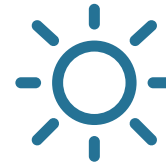
## TOTAL POPULATION

1 MI 12,452  
3 MI 90,887  
5 MI 250,271



## HOUSE HOLDS

1 MI 3,901  
3 MI 34,744  
5 MI 100,177



## DAYTIME POPULATION

1 MI 12,452  
3 MI 96,483  
5 MI 269,248



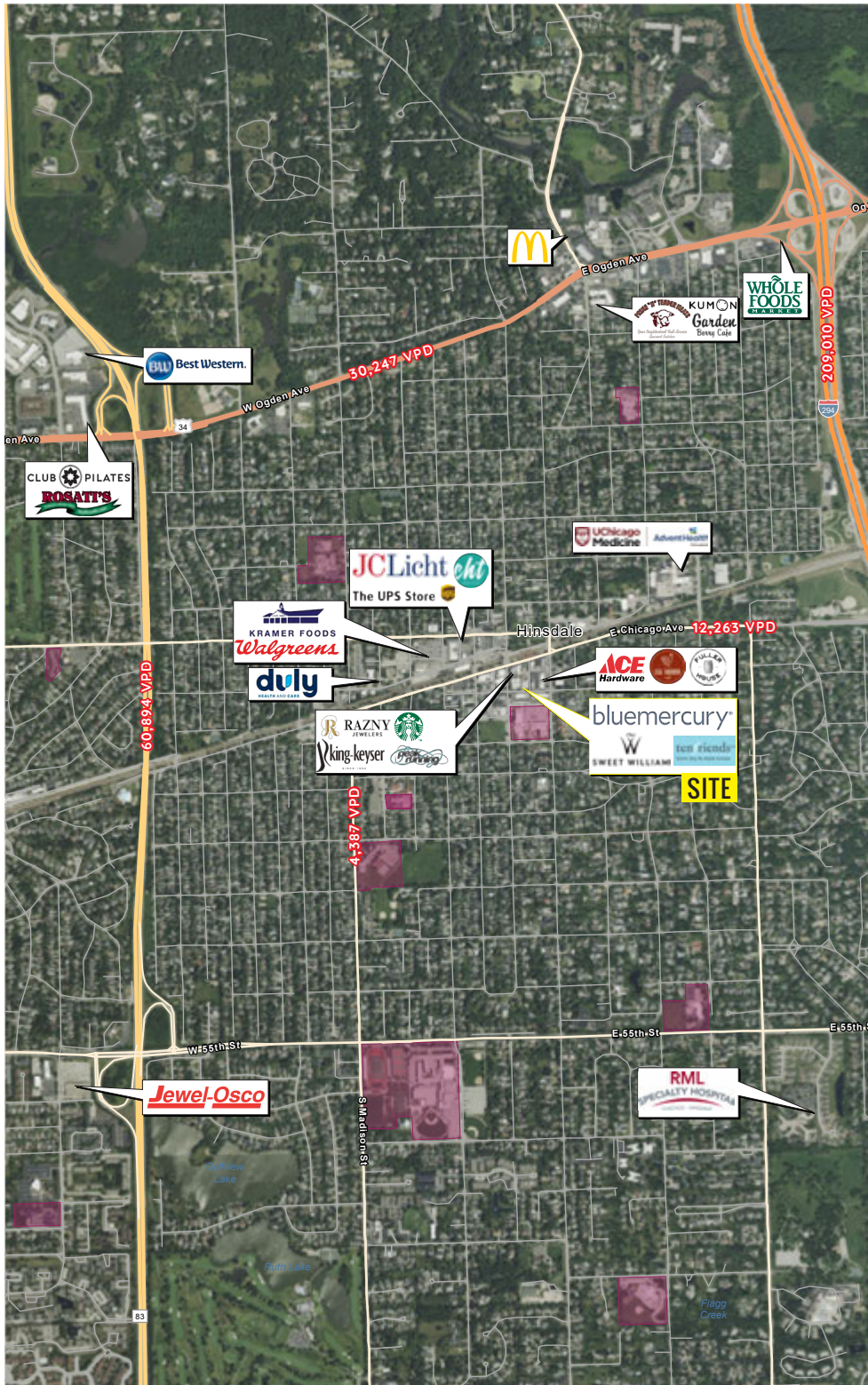
## AVG HH INCOME

1 MI \$492,165  
3 MI \$251,336  
5 MI \$189,269

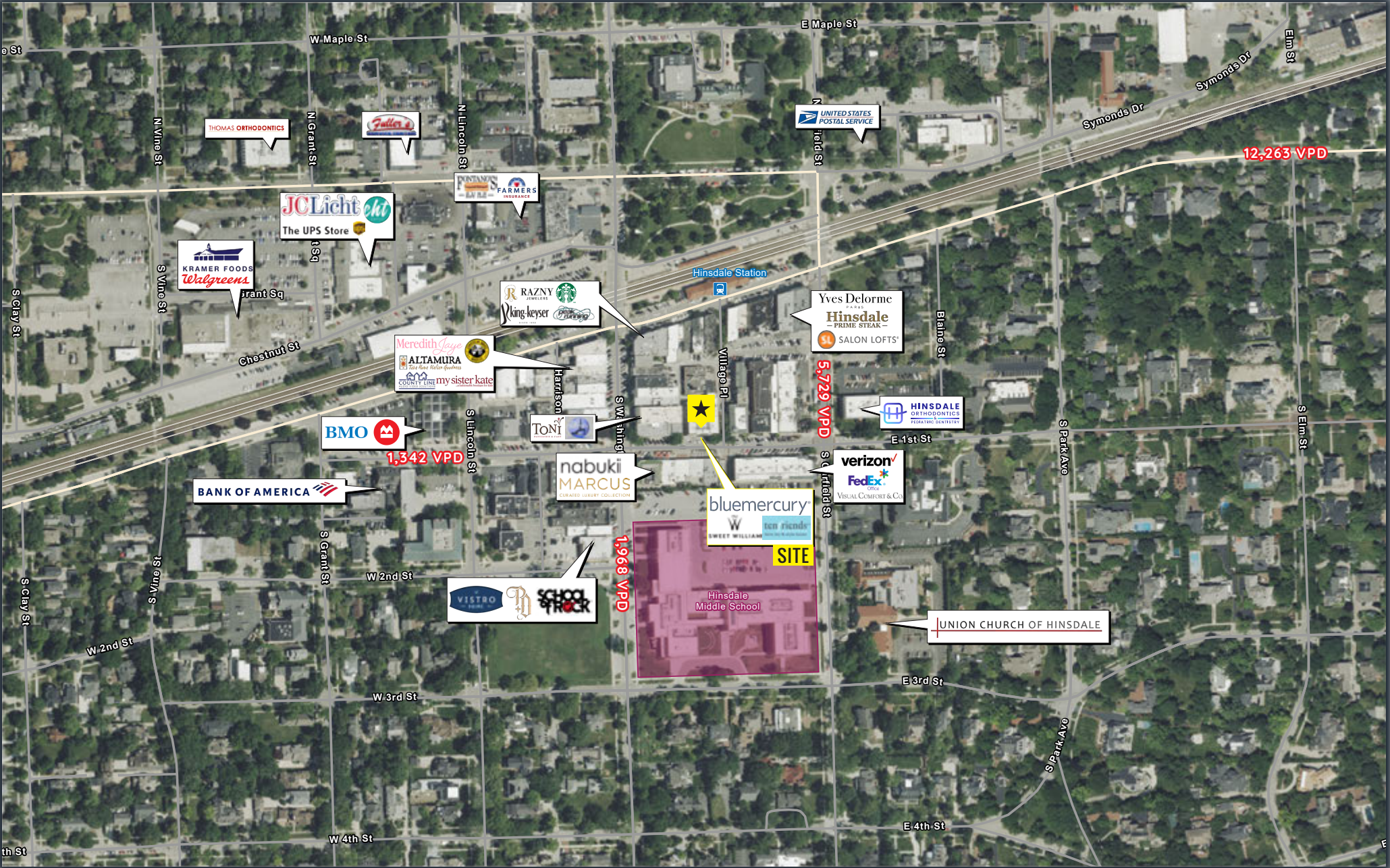
## TRAFFIC COUNTS

E 1ST ST	1,342 VPD
MADISON ST	4,387 VPD
CHICAGO AVE	12,263 VPD

## AREA TENANTS INCLUDE



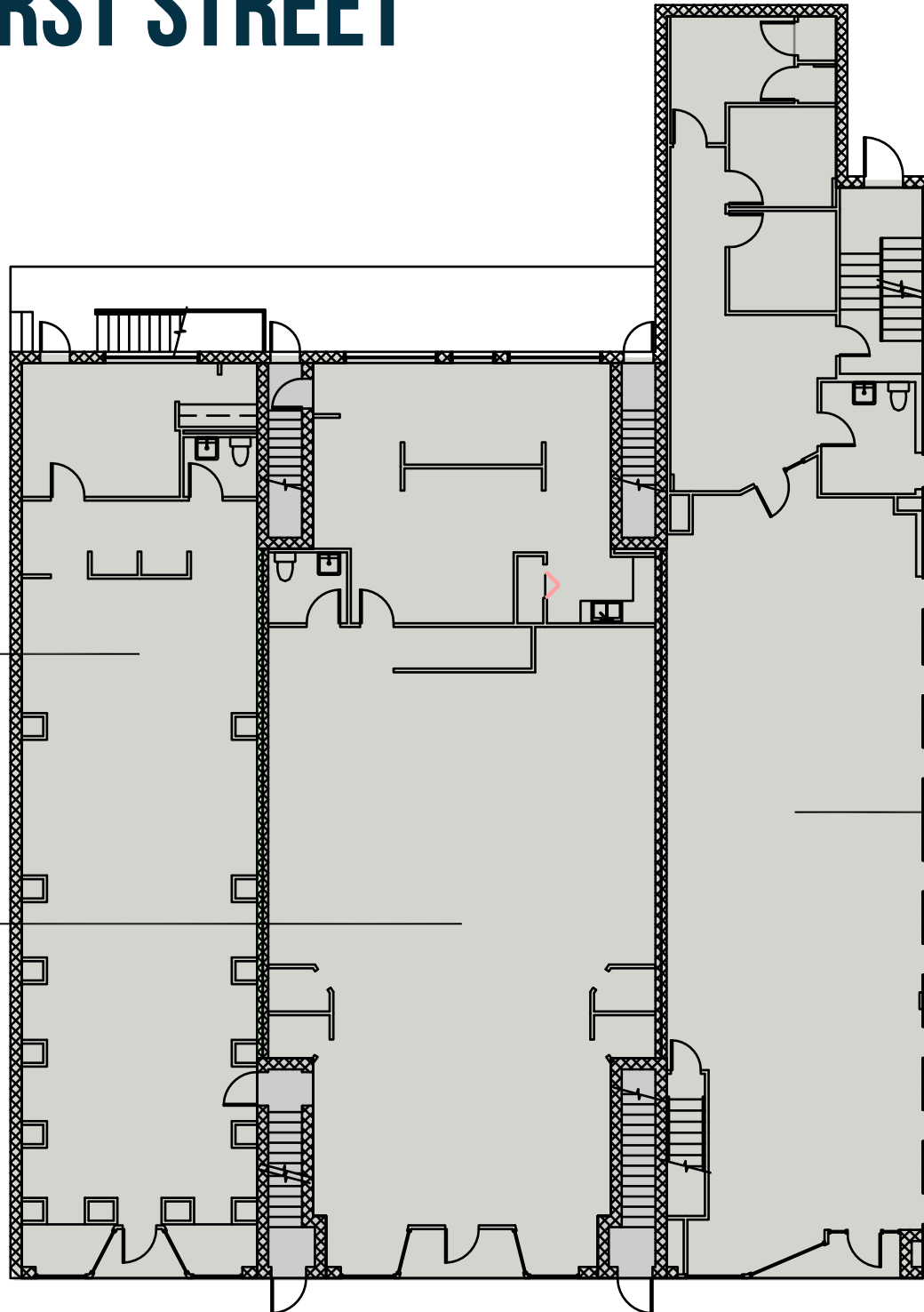
# TAKE A CLOSER LOOK



11-21 E First Street, IL 60521  
FOR SALE

# 11-21 E FIRST STREET

1ST FLOOR



tenfriends®  
blow dry & style house

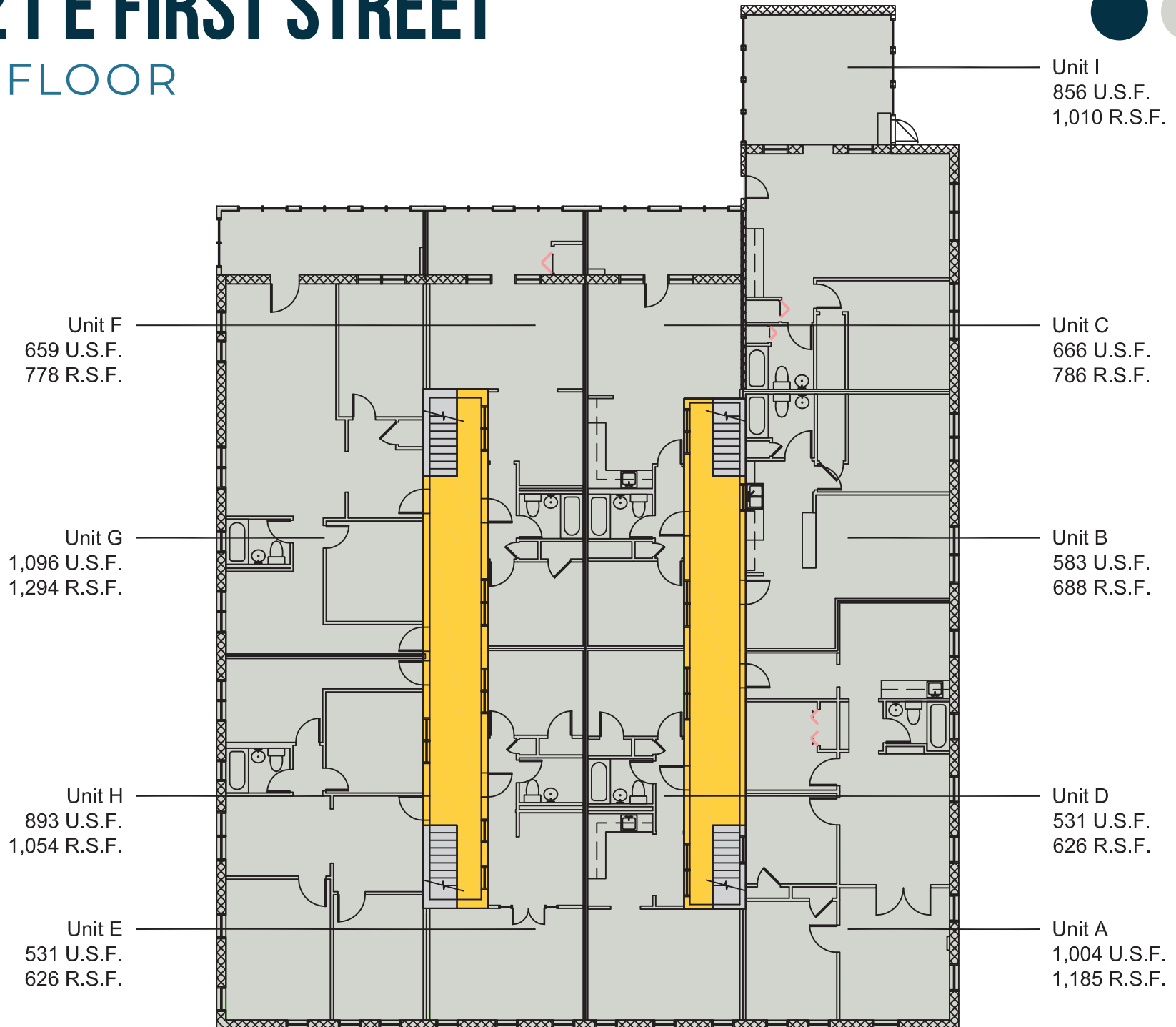


SWEET WILLIAM

bluemercury®

# 11-21 E FIRST STREET

## 2ND FLOOR





## FOR MORE INFORMATION



### PETER BALLYEAT

PETERB@KORMANLEDERER.COM  
773.307.5540

### STEVE BAER

SBAER@METROCRE.COM  
847.412.9898



[WWW.METROCRE.COM](http://WWW.METROCRE.COM)