

3934 W 24th St

**METRO**  
COMMERCIAL REAL ESTATE

FOR LEASE // 1,482 SF AVAILABLE



# 3934 W 24th St

## PROPERTY HIGHLIGHTS

- 1,482 SF Available
- 22nd Ward – Alderman Michael Rodriguez
- Nearby tenants include:
  - » DaVita Dialysis
  - » Advance Auto Parts
  - » Burger King

## DEMOGRAPHICS

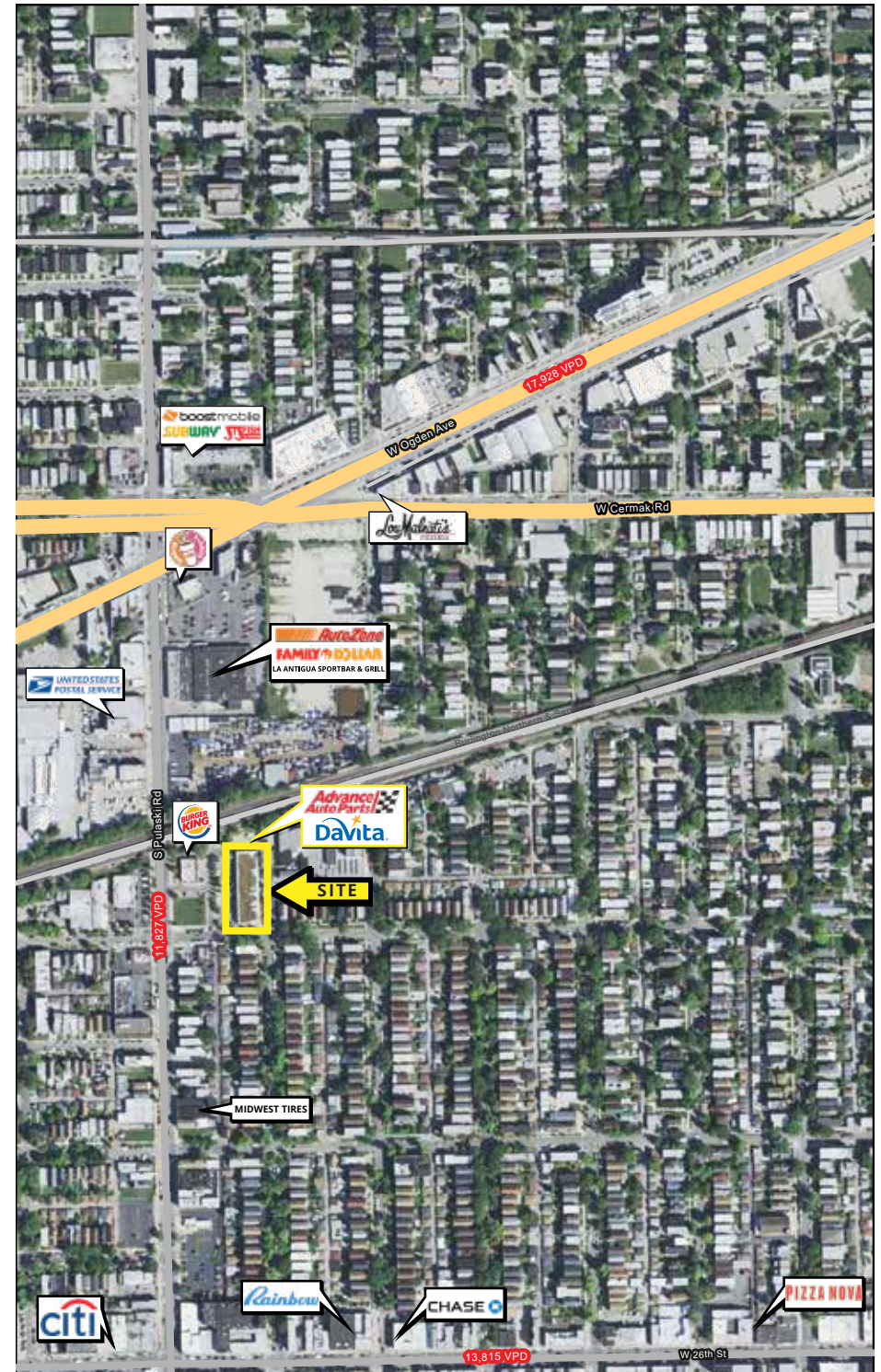
	½ MILE	1 MILE	2 MILES
TOTAL POPULATION	15,815	60,152	151,715
DAYTIME POPULATION	8,468	32,545	95,402
HOUSEHOLDS	5,199	19,022	47,138
AVG HH INCOME	\$69,574	\$63,986	\$68,135

## TRAFFIC COUNTS

S PULASKI RD 11,827 VPD

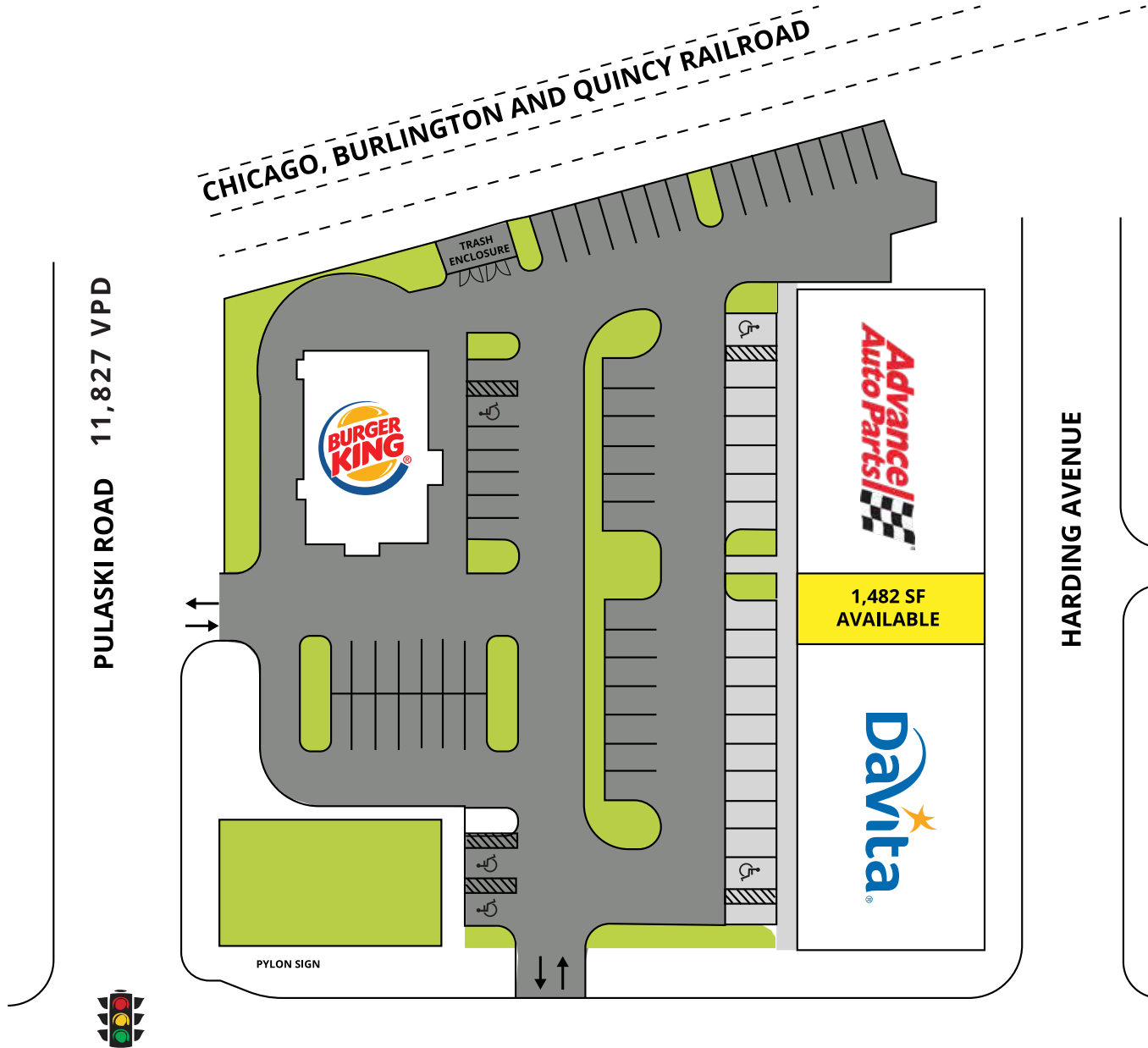
## WALK SCORE®

WALK SCORE	85
TRANSIT SCORE	63
BIKE SCORE	77



3934 W 24TH ST, CHICAGO, ILLINOIS

# 3934 W 24th St





## Leasing Contact

**CHELSEA HENDERSON**

CHENDERSON@METROCRE.COM

847.337.5287



[WWW.METROCRE.COM](http://WWW.METROCRE.COM)

© 2022 METRO COMMERCIAL REAL ESTATE. ALL RIGHTS RESERVED. ALL INFORMATION CONTAINED HEREIN IS FROM SOURCES DEEMED RELIABLE; HOWEVER, NO REPRESENTATION OR WARRANTY IS MADE TO THE ACCURACY THEREOF.