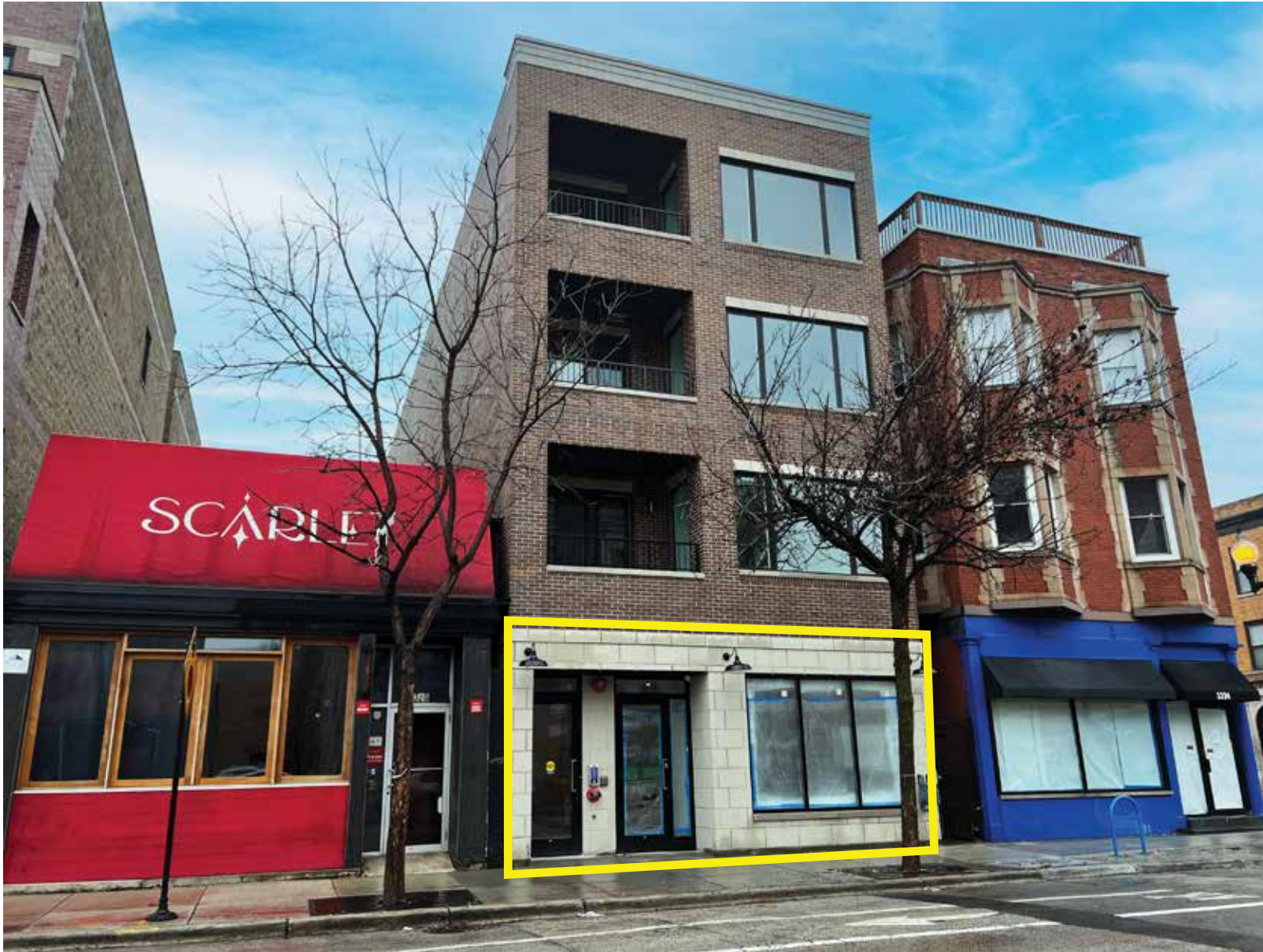


# Lakerview

750 SQUARE FEET  
FOR LEASE

3322 N HALSTED STREET, CHICAGO, ILLINOIS



# Lakeview

3322 N HALSTED ST, CHICAGO, ILLINOIS

## PROPERTY HIGHLIGHTS

- 750 SF Available for Lease
- New Construction Mixed-Use Building
- Dense Lakeview Location with Heavy Foot Traffic

## DEMOGRAPHICS

	½ MILE	1 MILE	2 MILES
TOTAL POPULATION	30,720	92,540	217,133
DAYTIME POPULATION	16,096	43,282	111,841
HOUSEHOLDS	20,441	59,940	126,742
AVG HH INCOME	\$145,538	\$162,157	\$177,196

## TRAFFIC COUNTS

N HALSTED ST	7,757 VPD
W BELMONT AVE	12,082 VPD
N CLARK ST	8,691 VPD

## WALK SCORE®

WALK SCORE	<b>95</b>	walker's paradise > daily errands do not require a car
TRANSIT SCORE	<b>79</b>	excellent transit > transit is convenient for most trips
BIKE SCORE	<b>89</b>	very bikeable > biking is convenient for most trips



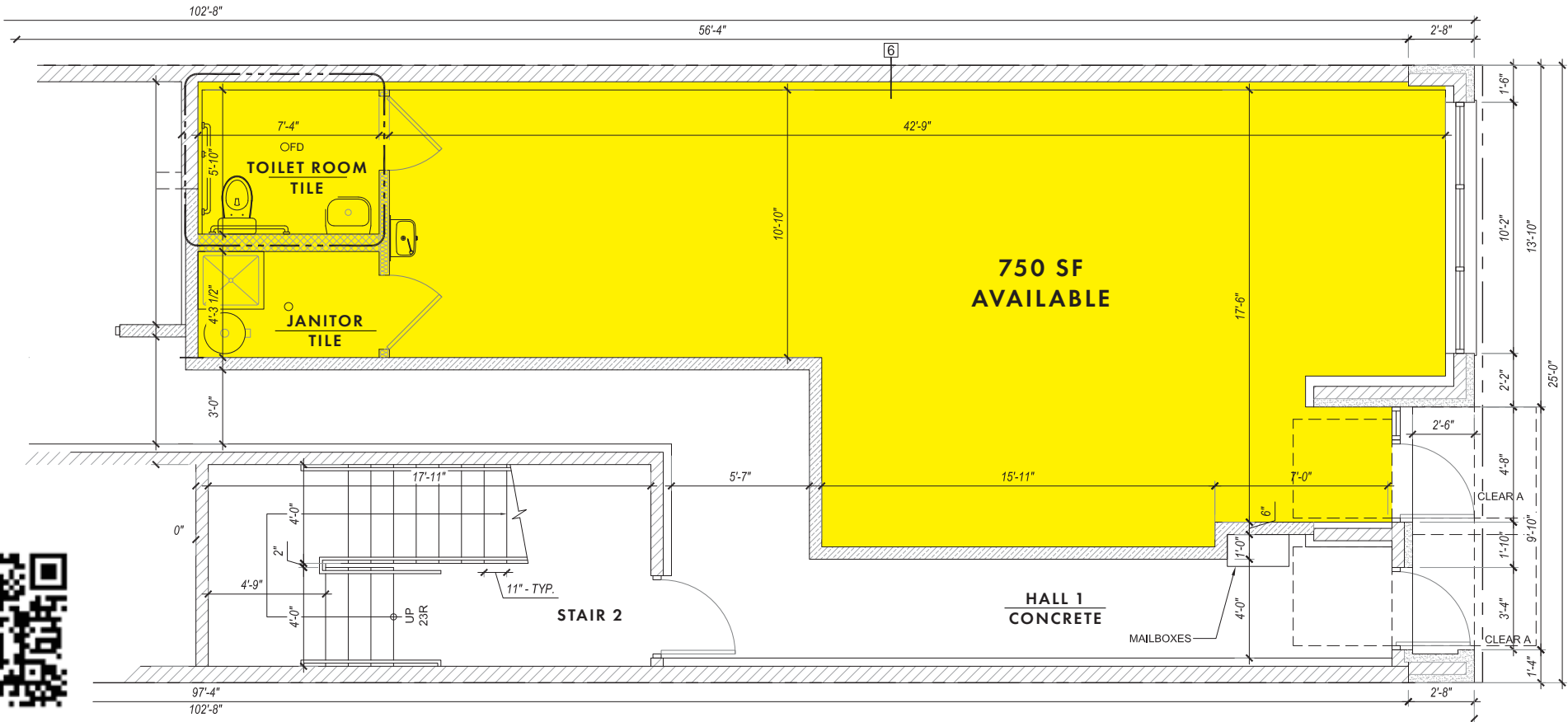
# Lakeview



3322 N HALSTED STREET, LAKEVIEW, CHICAGO, IL

# Lakeriew

3322 N HALSTED ST, CHICAGO, ILLINOIS



CLICK **HERE**  
OR SCAN FOR  
VIRTUAL TOUR  
750 SF

LEASING  
CONTACTS

**JONATHAN HYMAN**  
jhyman@metrocre.com  
224.365.8144

**HANNAH PERL**  
hperl@metrocre.com  
847.849.1026

**METRO**  
COMMERCIAL REAL ESTATE