



42,655 SF / 0.98 AC LAND AVAILABLE FOR SALE

LAND AVAILABLE

SWC 143RD ST & CREME RD, HOMER GLEN, IL

FOR SALE



CONTACT: STEVEN BAER sbaer@metrocre.com 847.412.9898

PROPERTY HIGHLIGHTS

- 8,000 sf (Divisible) Freestanding Building Available
- Located on High Trafficked Veterans Pkwy
- Lighted Access & Pylon Signage Available
- Adjacent to Walmart, Target, Aldi and more

DEMOGRAPHICS

	1 MILE	3 MILES	5 MILES
TOTAL POPULATION	4,311	38,196	98,744
DAYTIME POPULATION	12,079	38,739	147,848
HOUSEHOLDS	2,067	18,624	46,769
AVG HH INCOME	\$88,007	\$103,048	\$83,231

TRAFFIC COUNTS

143RD ST	11,800 VPD
CREME RD	2,458 VPD
I 355	28,982 VPD
S BELLE RD	11,890 VPD

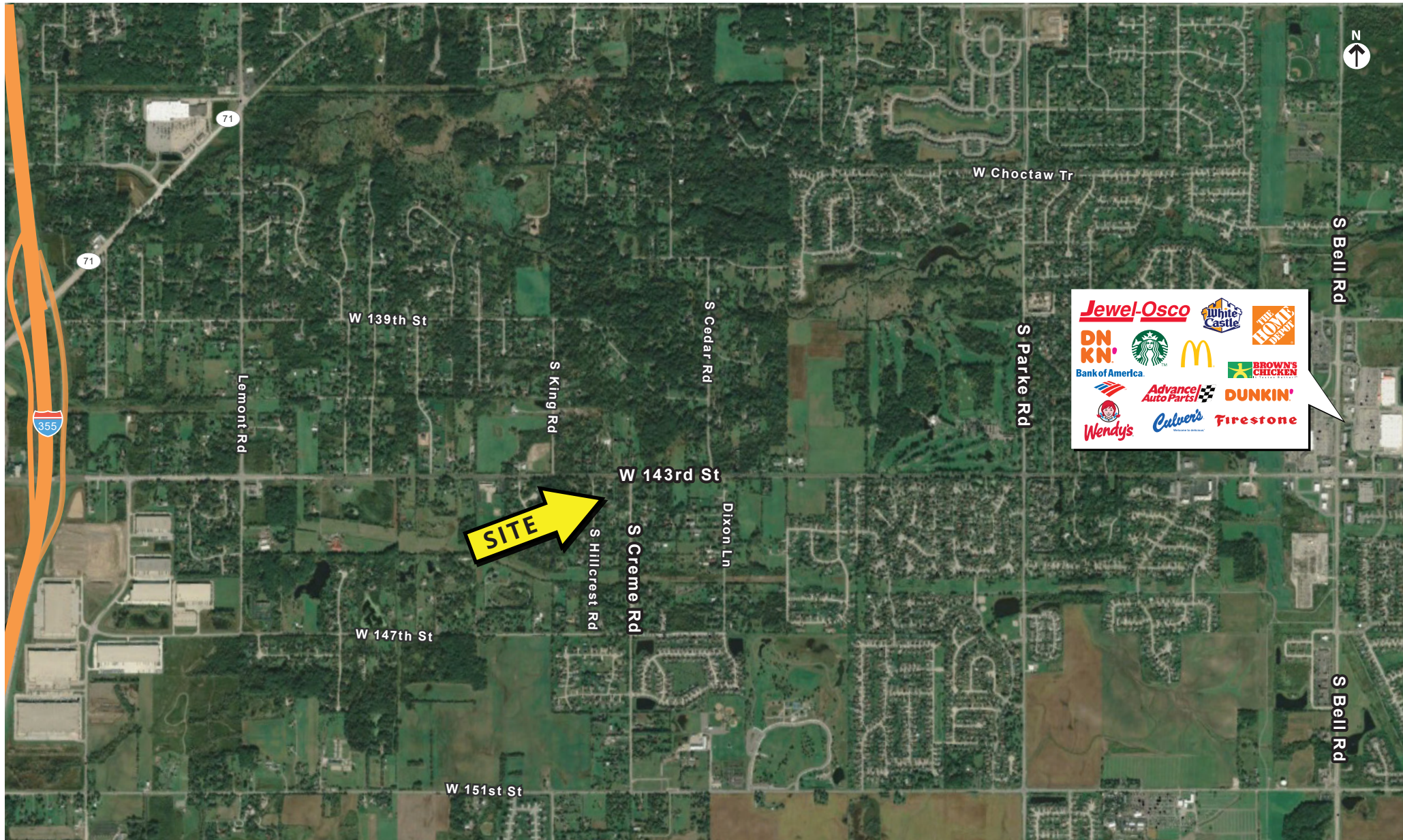
AREA TENANTS INCLUDE



LAND AVAILABLE

SWC 143D ST & CREME RD, HOMER GLEN, IL

FOR SALE



CONTACT INFORMATION:
STEVEN BAER
sbaer@metrocre.com
847.412.9898

56 Skokie Valley Road
Highland Park, Illinois 60035
www.MetroCRE.com

