

OUTLOTS & LAND PARCEL OPPORTUNITIES AVAILABLE

LOCKPORT SQUARE

SWC 159TH ST & I-355, LOCKPORT, IL

FOR SALE OR LEASE



CONTACT: **SHARON BAR-SHALOM** sbarshalom@metrocre.com 847.780.1299 // **GARY GREENFIELD** ggreenfield@metrocre.com 847.412.9898



PROPERTY HIGHLIGHTS

- Space Available at Lockport Square:
 - » Anchor & Inline Opportunities Available
 - » Improved Outparcels Available for Sale/Lease
- Shadow Anchored by Walmart & Jewel-Osco
- Adjacent to I-355 Interchange (68K VPD)
- Chrysler/Dodge/Jeep/Ram Dealership Opening 2021
- Lockport is Headquarters to RJ Logistic, LG Electronics, and Julian Electric
- 5,576,000 sq ft of Industrial Parks along I-355 (Employs Approx 3,000 People)
- 506 New Homes Built in the Last Four Years

DEMOGRAPHICS

	3 MILES	5 MILES	7 MILES
TOTAL POPULATION	34,771	95,135	247,524
DAYTIME POPULATION	17,590	57,161	169,696
HOUSEHOLDS	13,017	32,209	87,118
AVG HH INCOME	\$102,086	\$100,340	\$94,343

TRAFFIC COUNTS

159 TH STREET	30,877 VPD
FARRELL ROAD	10,787 VPD
I-355	115,622 VPD

COMING SOON TO LOCKPORT SQUARE

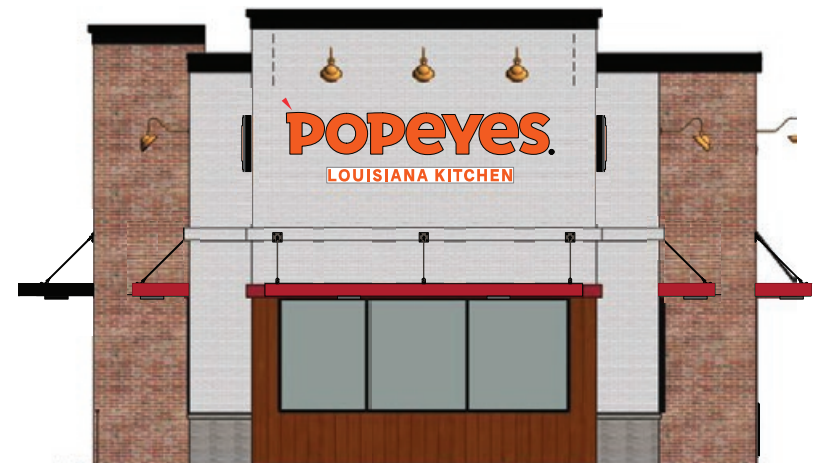


BETTENHAUSEN | CHRYSLER DODGE JEEP RAM **LOT 13a 10.997 AC**

A New 34,050 Square Foot Facility Chrysler Dodge Jeep Ram
Dealership with Parking for 656 Inventory/Display Vehicles plus
an additional 185 stalls for Customers, Employees and Service

NOW OPEN **POPEYES LOUISIANA KITCHEN** **LOT 11 0.909 AC**

A New 2,454 Square Foot Single-Tenant
Building with a 7 car stack Drive-thru for
Quick Service on the go



EXISTING MULTI-TENANT OUTLOT BUILDINGS



LOT 7 //



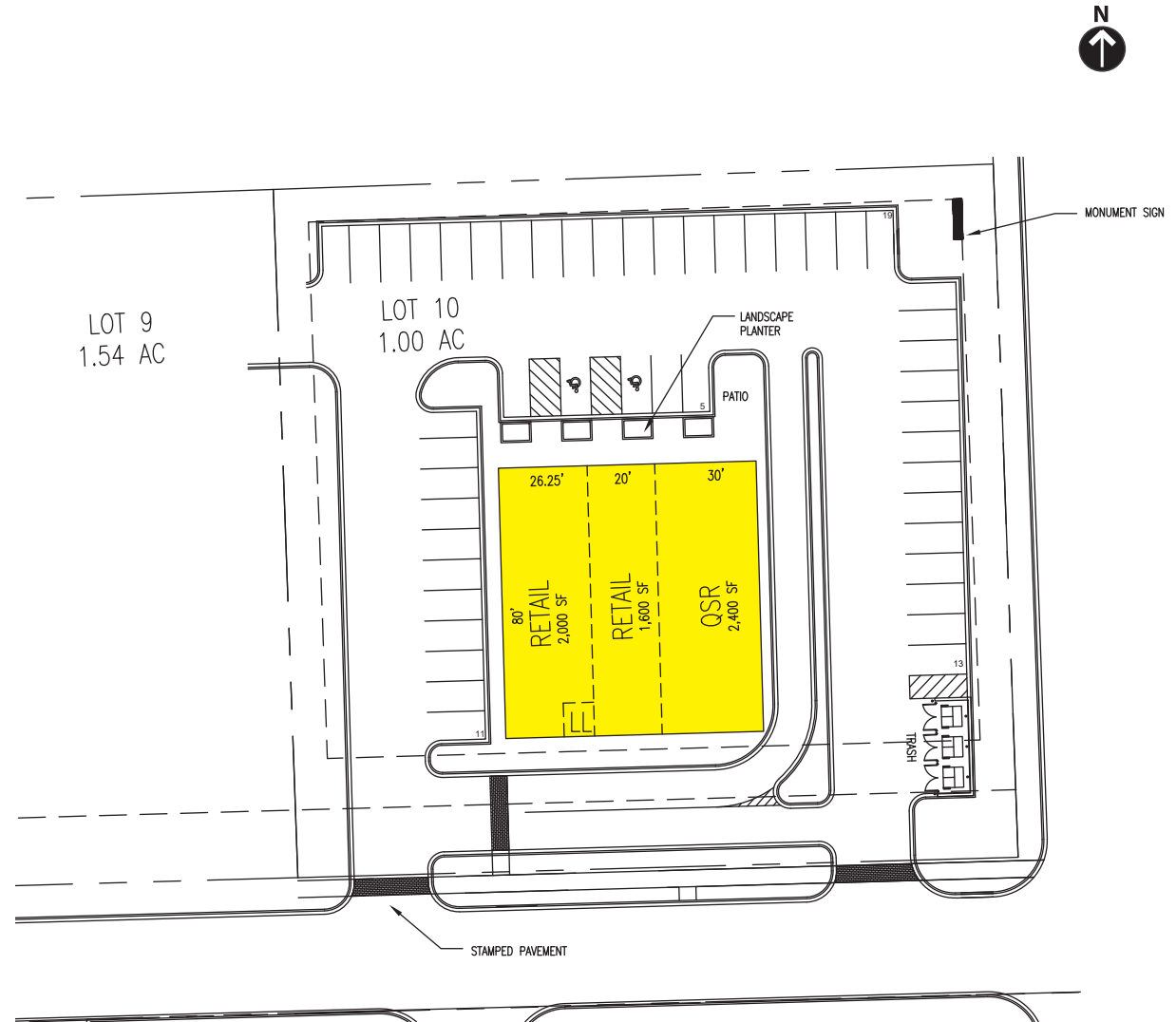
LOT 8 //



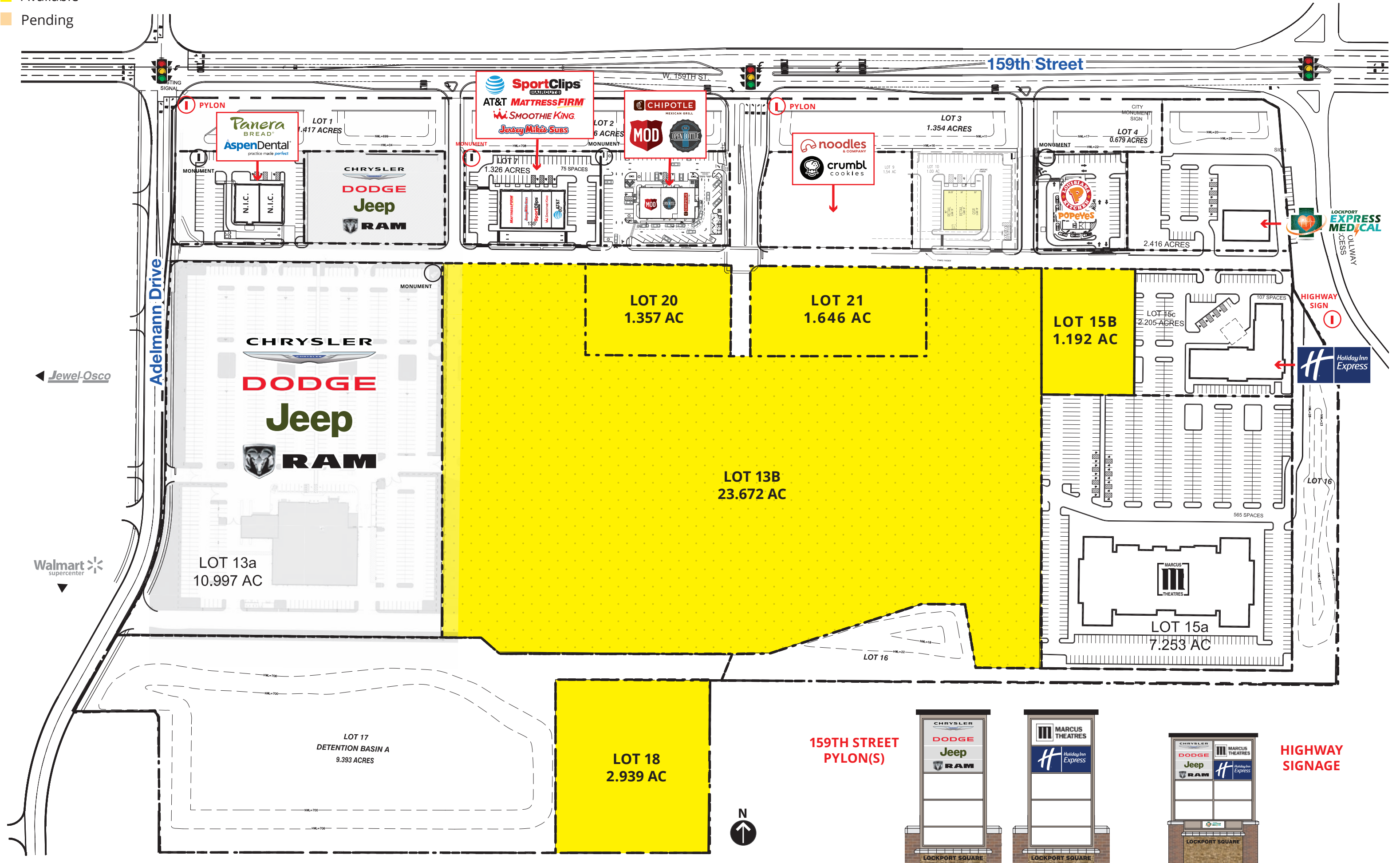
LOT 1 //

BUILD-TO-SUIT OUTLOT

LOT 10 // 1.00 Acres



Available
Pending





CONTACTS

SHARON BAR-SHALOM

SBARSHALOM@METROCRE.COM

847.780.1299

GARY GREENFIELD

GGREENFIELD@METROCRE.COM

847.412.9898



WWW.METROCRE.COM