



CONCEPTUAL RENDERING

JOIN CHRYSLER-DODGE-JEEP-RAM DEALERSHIP IN LOCKPORT

LOCKPORT SQUARE

SWC 159TH ST & I-355, LOCKPORT, IL

FOR SALE OR LEASE



CONTACT: **SHARON BAR-SHALOM** sbarshalom@metrocre.com 847.780.1299 // **GARY GREENFIELD** ggreenfield@metrocre.com 847.412.9898



PROPERTY HIGHLIGHTS

- Opportunities Available at Lockport Square:
 - » **Dealership Opportunity on 20.096 Acre Parcel**
 - » **Improved Outparcels Available for Sale/Lease**
- Shadow Anchored by Walmart & Jewel-Osco
- Adjacent to I-355 Interchange (68K VPD)
- Chrysler/Dodge/Jeep/Ram dealership opening 2021
- Lockport is headquarters to RJ Logistic, LG Electronics and Julian Electric
 - » 5,576,000 sq ft of industrial parks along I-355 (employ approx 3,000 people)
- New residential developments plan to build 269 single homes and 374 luxury apartments & townhomes; 506 new housing units built in the last four years

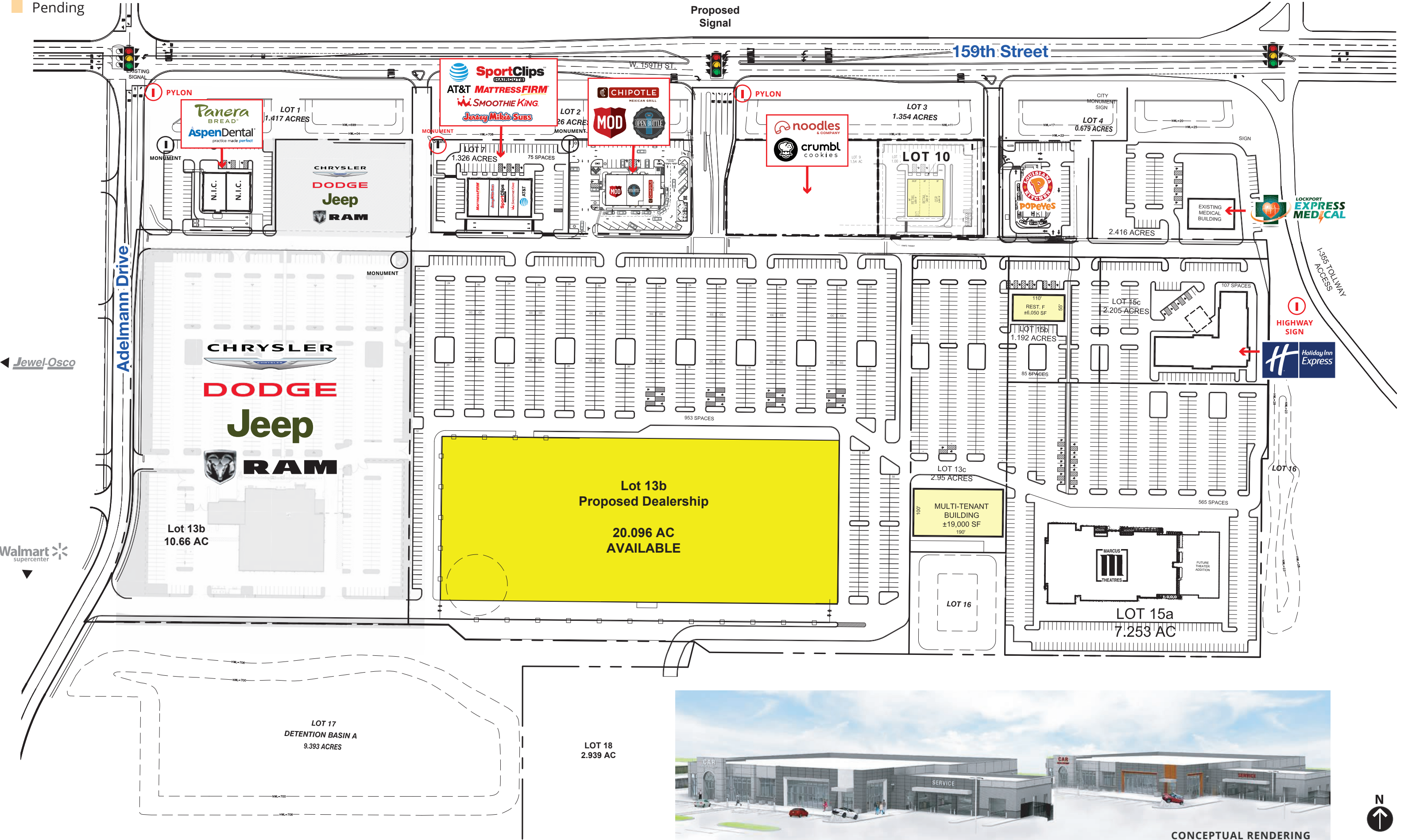
DEMOGRAPHICS

	3 MILES	5 MILES	7 MILES
TOTAL POPULATION	34,771	95,135	247,524
DAYTIME POPULATION	17,590	57,161	169,696
HOUSEHOLDS	13,017	32,209	87,118
AVG HH INCOME	\$102,086	\$100,340	\$94,343

TRAFFIC COUNTS

159 TH STREET	30,877 VPD
FARRELL ROAD	10,787 VPD
I-355	115,622 VPD

Available
Pending





CONTACTS

SHARON BAR-SHALOM

SBARSHALOM@METROCRE.COM

847.780.1299

GARY GREENFIELD

GGREENFIELD@METROCRE.COM

847.412.9898



WWW.METROCRE.COM