

# West Town

1140 W ERIE STREET, CHICAGO, ILLINOIS

**METRO**  
COMMERCIAL REAL ESTATE

FOR LEASE // 1,400 SQ FT NEW CONSTRUCTION AVAILABLE



1140 W ERIE STREET,  
CHICAGO, ILLINOIS



### PROPERTY HIGHLIGHTS

- 1,400 SF New Construction Space
- In the Base of a 113-unit Residential Building
- On the busy Corner of Erie and Ogden
- Alderman Walter Burnett, Jr, Ward #27 (Zoning PD 1480)

### TRAFFIC COUNTS

OGDEN AVE	20,707 VPD
MAY STREET	4,851 VPD
I-90 / I-94	163,113 VPD

### DEMOGRAPHICS

	½ MILE	1 MILE	2 MILES
TOTAL POPULATION	12,563	56,208	258,588
DAYTIME POPULATION	15,444	90,199	758,294
HOUSEHOLDS	6,616	32,033	149,213
AVG HH INCOME	\$127,492	\$157,603	\$157,385

### WALK SCORE®

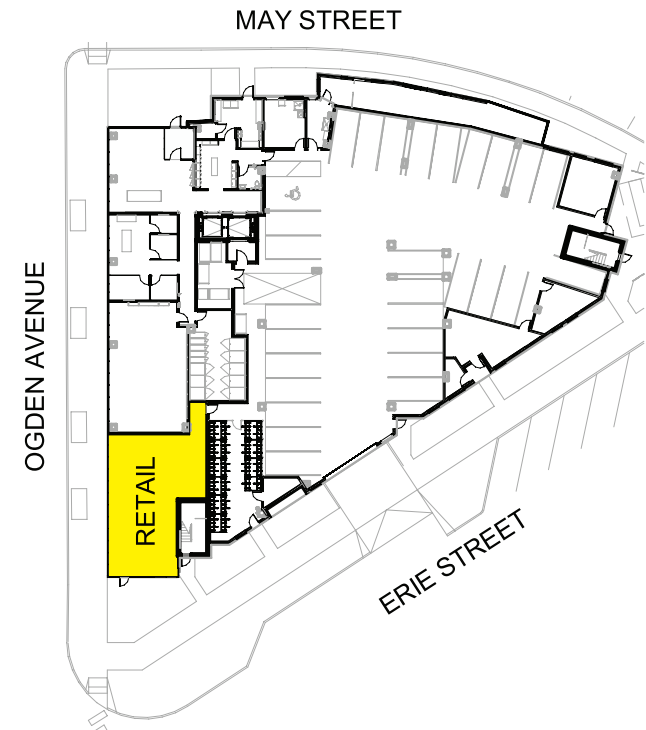
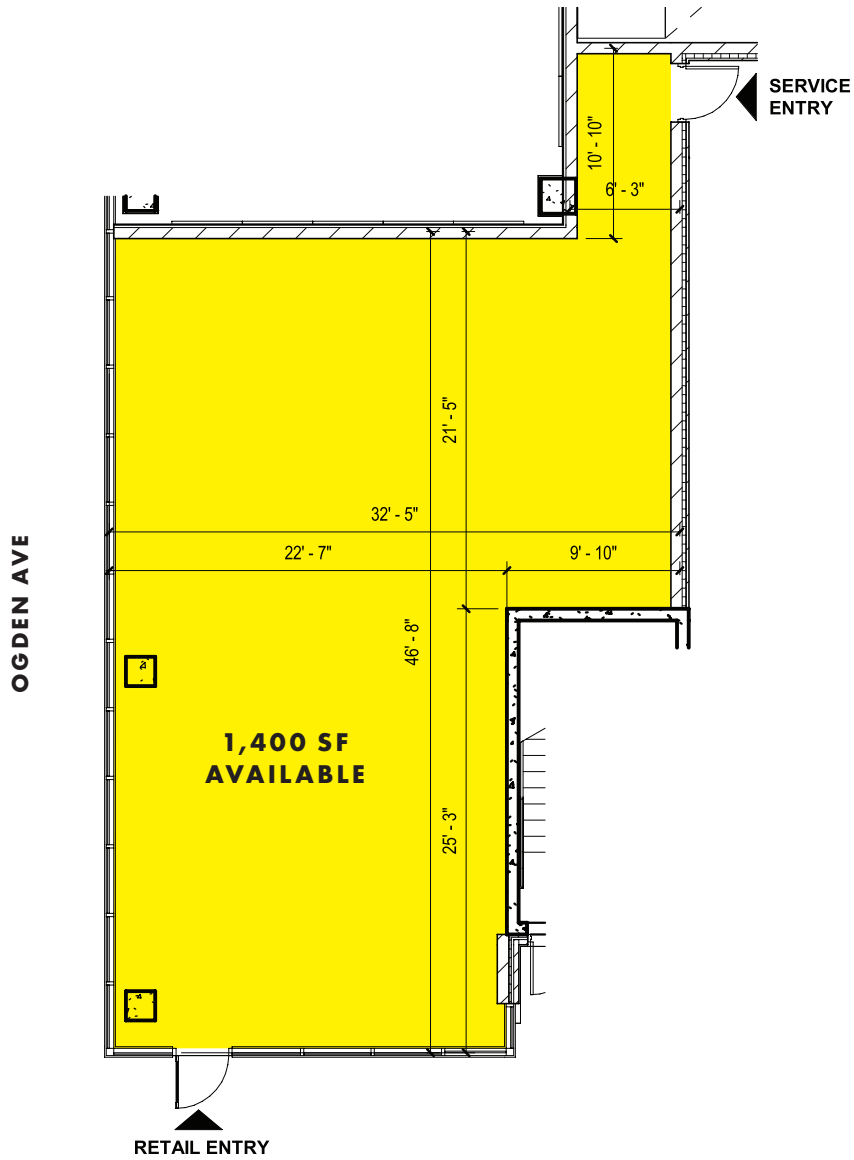
WALK SCORE	<b>95</b>	walker's paradise > daily errands do not require a car
TRANSIT SCORE	<b>79</b>	excellent transit > transit is convenient for most trips
BIKE SCORE	<b>97</b>	biker's paradise > daily errands can be accomplished on a bike

# West Town



# West Town

1140 W ERIE STREET, CHICAGO, ILLINOIS



FOR MORE INFORMATION, CONTACT:

**HANNAH PERL**

hperl@metrocre.com 847.849.1026

1142 West Madison  
Suite 405  
Chicago, Illinois 60607

www.MetroCRE.com



**METRO**  
COMMERCIAL REAL ESTATE