



JUNIOR ANCHOR, BUILD-TO-SUIT & PARCEL OPPORTUNITIES

LOCKPORT SQUARE

SWC 159TH ST & I-355, LOCKPORT, IL

FOR SALE OR LEASE



CONTACT: **SHARON BAR-SHALOM** sbarshalom@metrocre.com 847.780.1299 // **GARY GREENFIELD** ggreenfield@metrocre.com 847.412.9898



PROPERTY HIGHLIGHTS

- Space Available at Lockport Square:
 - » Junior Anchor & Inline Opportunities Available
 - » Build-to-Suit New Construction Outlot (Lot 10)
 - » Improved Outparcels Available for Sale/Lease
- Shadow Anchored by Walmart & Jewel-Osco
- Adjacent to I-355 Interchange (68K VPD)
- Chrysler/Dodge/Jeep/Ram Dealership Opening 2021
- Lockport is Headquarters to RJ Logistic, LG Electronics, and Julian Electric
- 5,576,000 sq ft of Industrial Parks along I-355 (Employs Approx 3,000 People)
- 506 New Homes Built in the Last Four Years

DEMOGRAPHICS

	3 MILES	5 MILES	7 MILES
TOTAL POPULATION	34,771	95,135	247,524
DAYTIME POPULATION	17,590	57,161	169,696
HOUSEHOLDS	13,017	32,209	87,118
AVG HH INCOME	\$102,086	\$100,340	\$94,343

TRAFFIC COUNTS

159 TH STREET	30,877 VPD
FARRELL ROAD	10,787 VPD
I-355	115,622 VPD

EXISTING MULTI-TENANT OUTLOT BUILDINGS



LOT 7 //



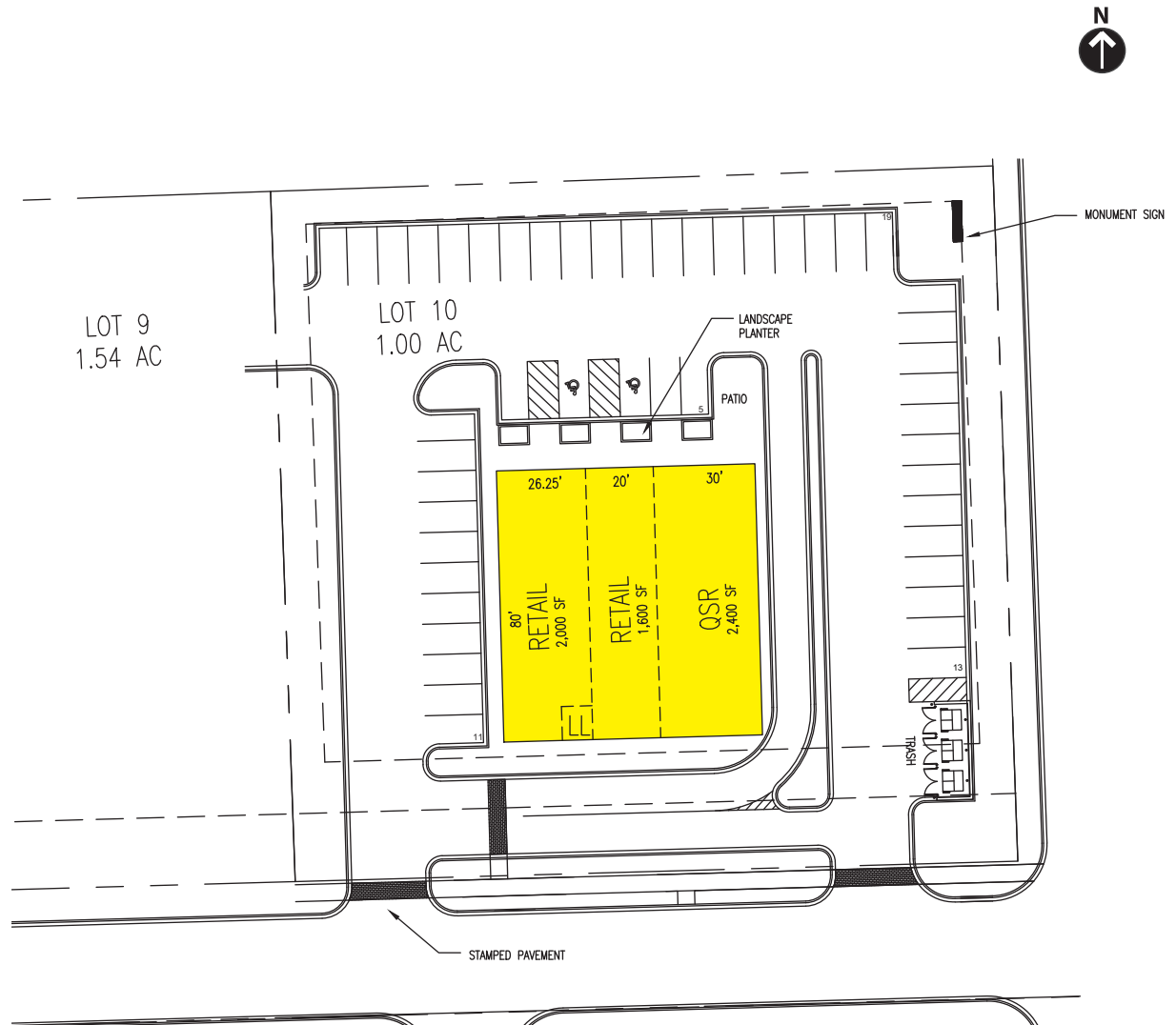
LOT 8 //



LOT 1 //

BUILD-TO-SUIT OUTLOT

LOT 10 // 1.00 Acres





LOT 13b		#	OUTLOTS	BUILDING SF	LAND AC	
A	20,000 SF	10	Multi-Tenant	See Page 4	1.00 AC	Available
B	7,500 SF	11	Popeyes	N/A	.909 AC	
C	7,500 SF	20	Restaurant	9,000 SF	1.357 AC	Available
D	10,000 SF	21	Restaurant	5,000 SF	1.646 AC	Available
E	45,000 SF	15A	Marcus Theatres	N/A	7.253 AC	
F	22,000 SF	15B	Restaurant	6,050 SF	1.192 AC	Available
G	22,000 SF	15C	Holiday Inn	N/A	2.205 AC	
H	10,000 SF	18	Land	N/A	2.939 AC	Available
I	18,241 SF					
J	25,000 SF					





CONTACTS

SHARON BAR-SHALOM

SBARSHALOM@METROCRE.COM

847.780.1299

GARY GREENFIELD

GGREENFIELD@METROCRE.COM

847.412.9898



WWW.METROCRE.COM