



3,587 SQ FT ENDCAP RESTAURANT AVAILABLE FOR LEASE

2ND GEN RESTAURANT
1853 2ND STREET, HIGHLAND PARK, IL
FOR LEASE



CONTACT: HANNAH PERL hperl@metrocre.com 847.849.1026 // **STEVEN BAER** sbaer@metrocre.com 847.412.9898

PROPERTY HIGHLIGHTS

- 3,587 SF 2nd Gen Endcap Restaurant
- Some Equipment Included
- Located in Affluent Downtown Highland Park Market
- Private Parking Lot in the Back & Adjacent to Public Parking

DEMOGRAPHICS

	1 MILE	3 MILES	5 MILES
TOTAL POPULATION	9,330	48,032	101,390
DAYTIME POPULATION	12,608	54,421	143,861
HOUSEHOLDS	3,934	18,578	37,824
AVG HH INCOME	\$220,216	\$230,175	\$244,595

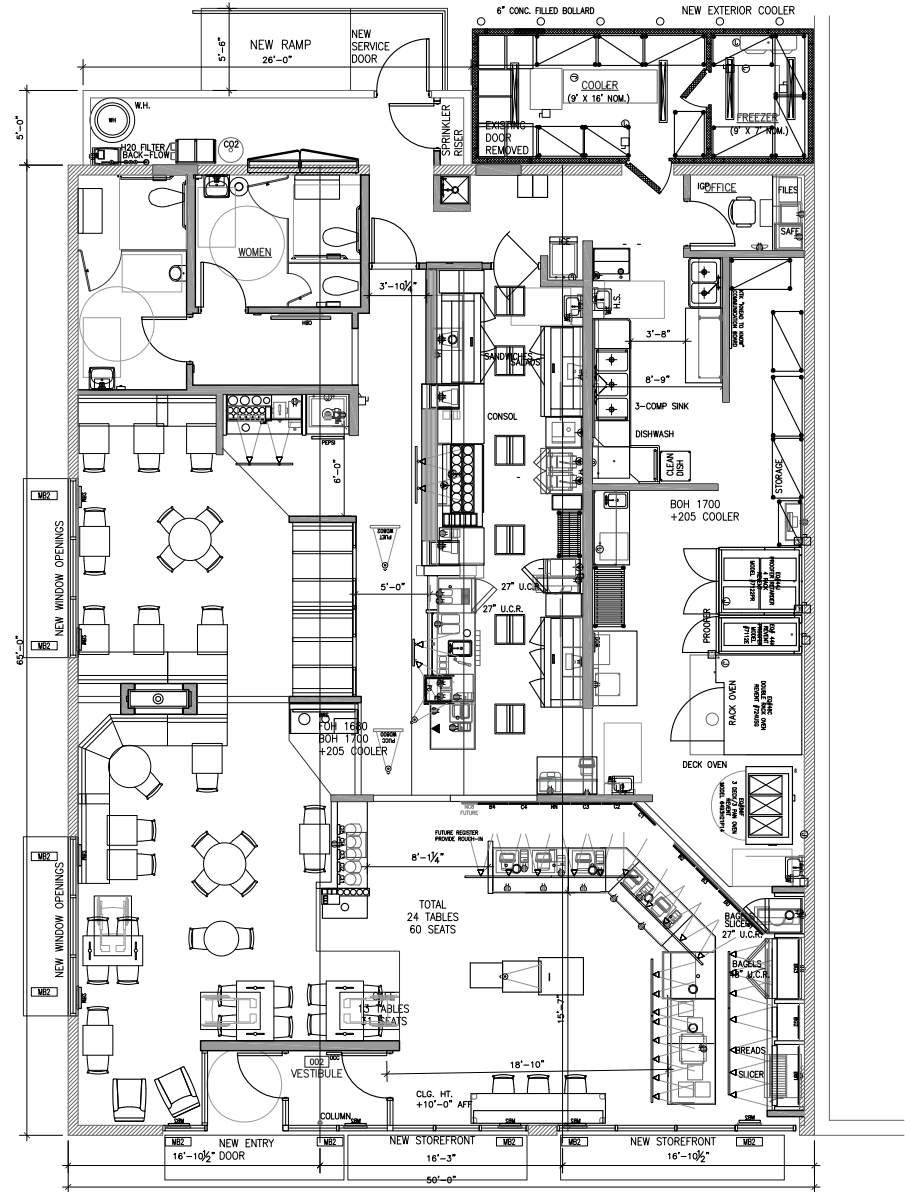
TRAFFIC COUNTS

GREEN BAY RD	9,860 VPD
CENTRAL AVE	12,549 VPD
ST JOHNS AVE	3,304 VPD

AREA TENANTS INCLUDE

POTTERY BARN

SUMMER CLASSICS



SECOND STREET



2ND GEN RESTAURANT

1853 2ND STREET, HIGHLAND PARK, IL

FOR LEASE



CONTACT INFORMATION:

HANNAH PERL
 hperl@metrocre.com
 847.849.1026

STEVEN BAER
 sbaer@metrocre.com
 847.412.9898

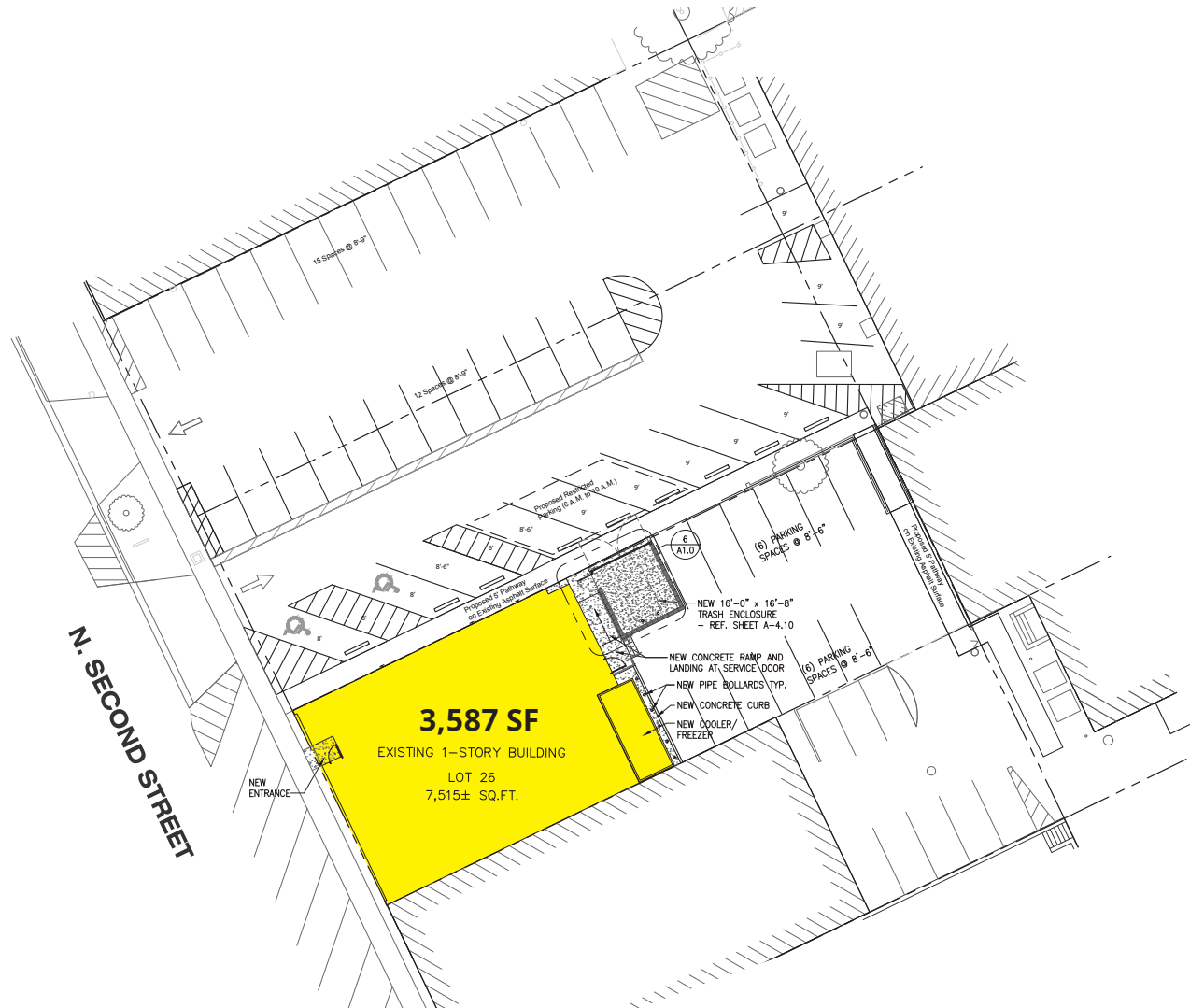
56 Skokie Valley Road
 Highland Park, Illinois 60035
 www.MetroCRE.com



2ND GEN RESTAURANT

1853 2ND STREET, HIGHLAND PARK, IL

FOR LEASE



CONTACT
INFORMATION:

HANNAH PERL
hperl@metrocre.com
847.849.1026

STEVEN BAER
sbaer@metrocre.com
847.412.9898

56 Skokie Valley Road
Highland Park, Illinois 60035
www.MetroCRE.com



METRO
COMMERCIAL REAL ESTATE