



3,500 SQUARE FEET AVAILABLE ON CICERO AVENUE

RETAIL SPACE AVAILABLE

11346 S CICERO AVE, ALSIP, IL

FOR LEASE



CONTACT: SHARON BAR-SHALOM sbarshalom@metrocre.com 847.780.1299 // **STEVEN BAER** sbaer@metrocre.com 847.412.9898

PROPERTY HIGHLIGHTS

- 3,500 Sq Ft Available
- Located on high trafficked Cicero Ave (36K VPD)
- Just North of I-294 interchange
- 1 Mile West of Marist High School (1,780 students)

DEMOGRAPHICS

	1 MILE	3 MILES	5 MILES
TOTAL POPULATION	13,959	134,417	384,744
DAYTIME POPULATION	9,197	100,342	266,755
HOUSEHOLDS	5,636	53,659	143,814
AVG HH INCOME	\$81,394	\$82,149	\$81,369

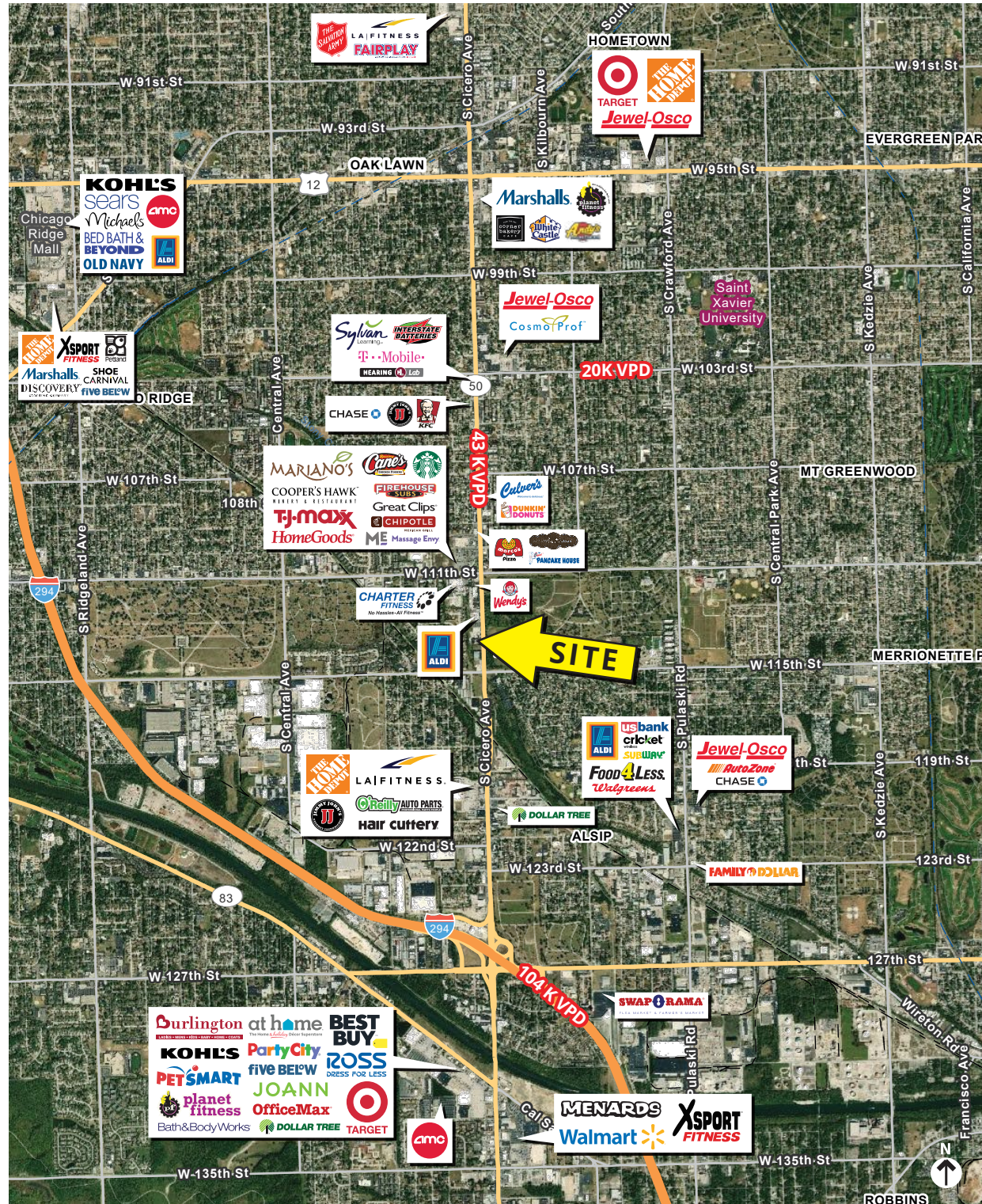
TRAFFIC COUNTS

	COUNT
CICERO AVE	39K VPD
115TH ST	14K VPD
111TH ST	24K VPD

AREA TENANTS INCLUDE

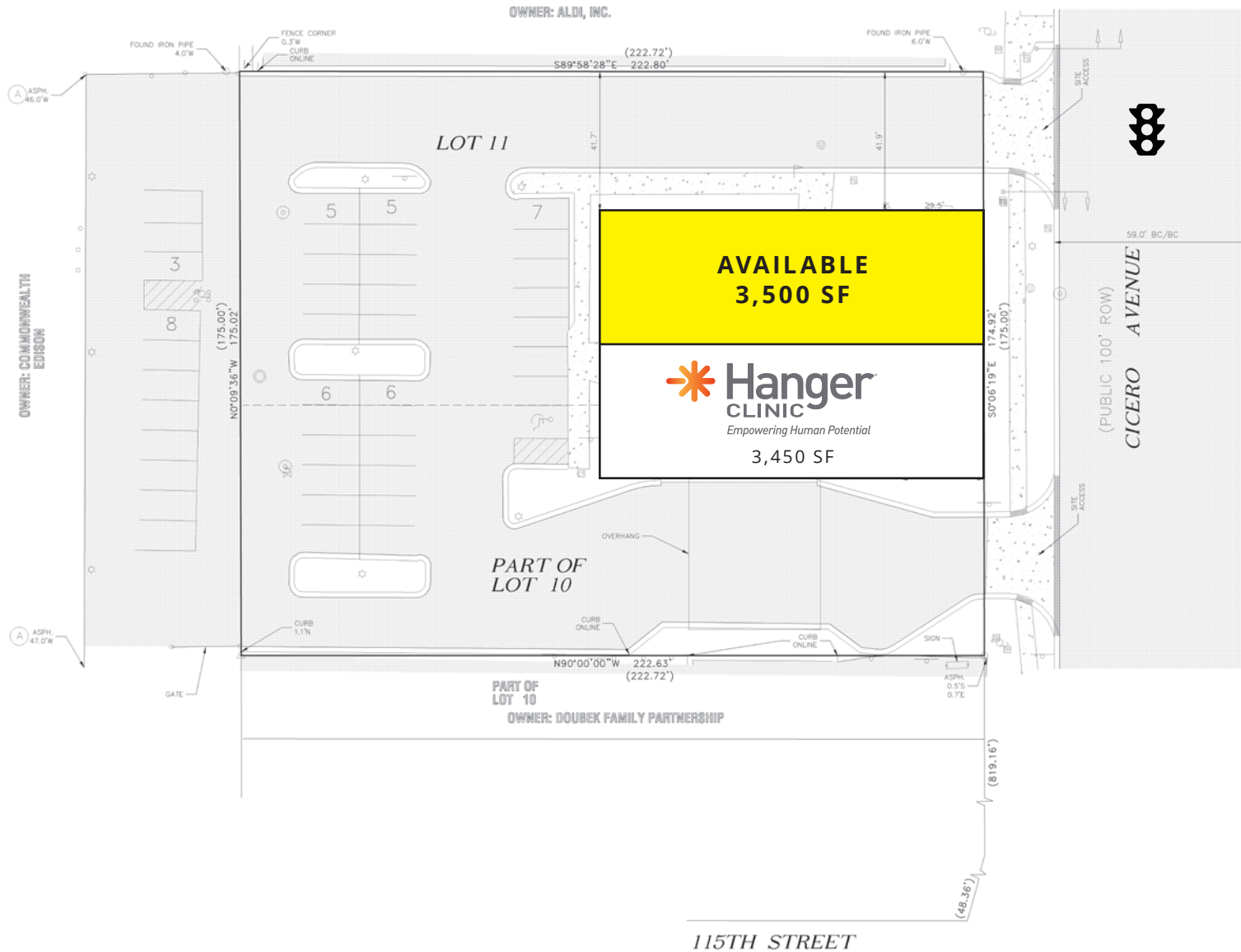


COOPER'S HAWK™
WINERY & RESTAURANT



RETAIL SPACE AVAILABLE

11346 S CICERO AVE, ALSIP, IL



CONTACT
INFORMATION:

SHARON BAR-SHALOM
sbarshalom@metrocre.com
847.780.1299

STEVEN BAER
sbaer@metrocre.com
847.412.9898

56 Skokie Valley Road
Highland Park, Illinois 60035
www.MetroCRE.com

